

UPCERA



S6000

Intraoral Scanner

Reliable Materials Expert

S6000

Intraoral Scanner

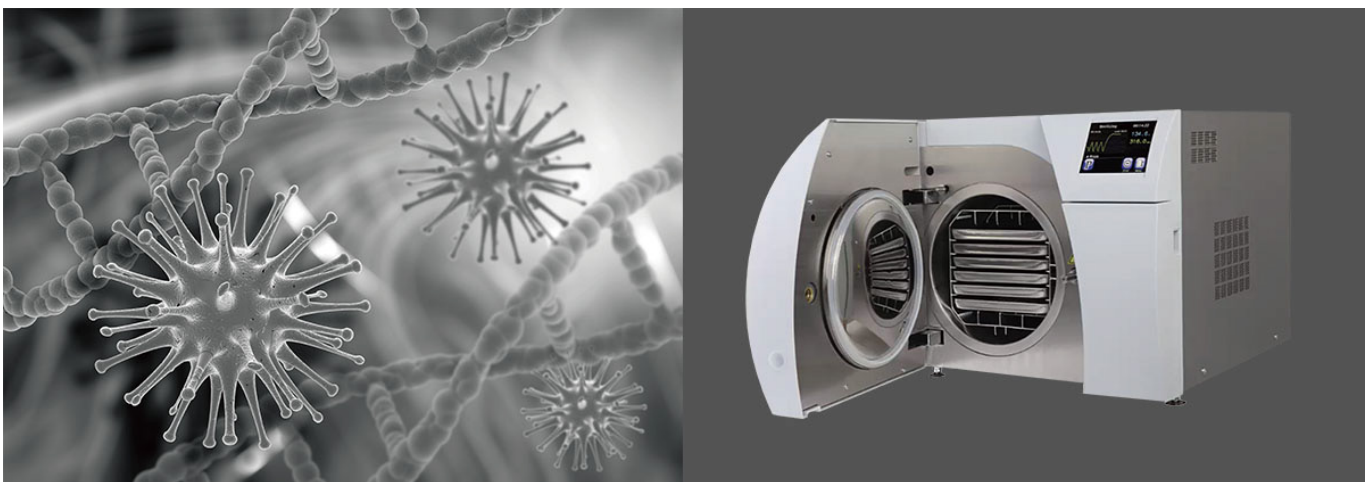
High Precision and fast Scanning

High accuracy that can cover all different indications
Whole scanning process takes ≤ 3 minutes approximately
which is much faster than taking traditional impression



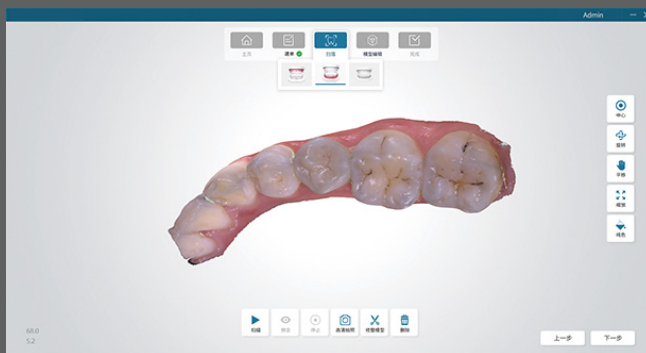
Continuous scanning

Shorten the clinical operation time and improve the efficiency
Real time display of scanning data, doctors can analyze
the data simultaneously



Powder free

Simplify scanning procedure and reduce complexity
Improve patients comfort

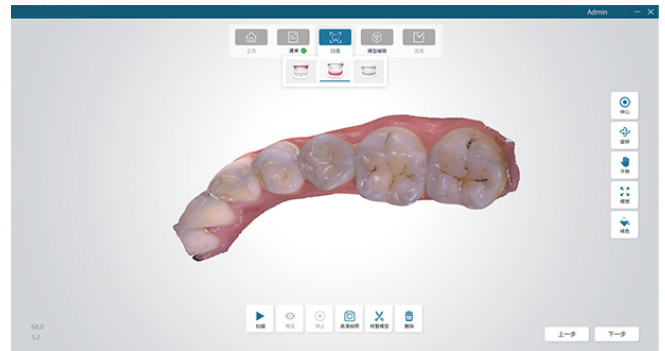


Chromoscan

Colored scanning that can show the true dental situation in vivo in real-time

Intraoral Camera

Take intraoral photo during scanning which can assist operator to communicate with patients



Occlusion relationship analysis

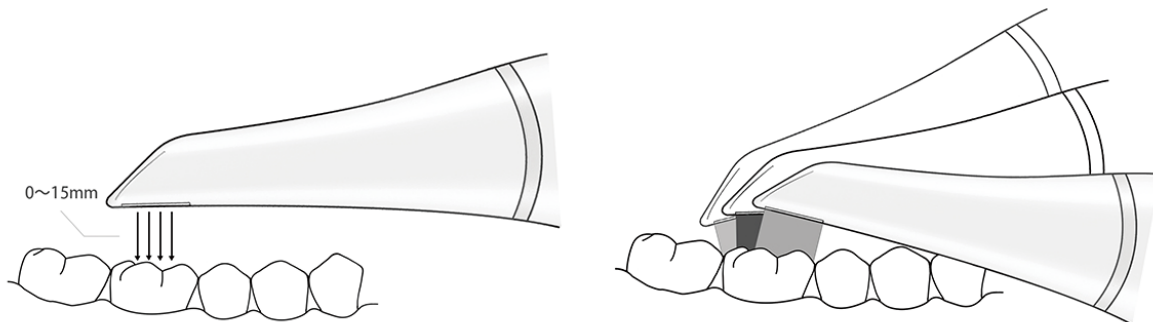
Assist operator to check the occlusion relationship and interocclusal space by view the color scale

Intelligent optimization

Automatically remove any redundant data such as gloves, tongue etc

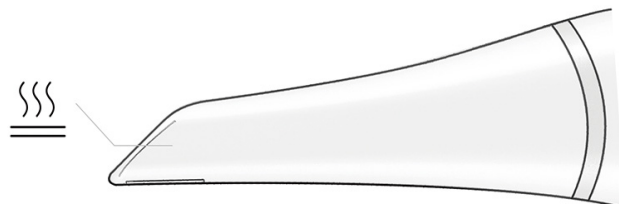
Moderate depth of field

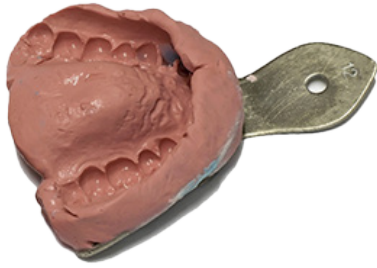
15mm depth of field to provide scanning efficiency and ensure data integrity



Built-in anti-fog module

Scanner tips with automatically mirror heating to ensure data accuracy



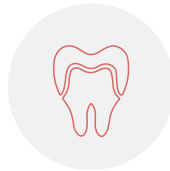
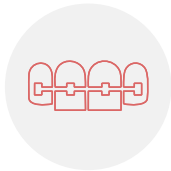


Traditional Impression

- Takes 10 Mins
- Strong gag reflex
- Poor comfort
- Complex procedure
- Colorless plater model

Digital impression

- Takes 5 Mins
- No gag reflex
- Excellent comfort
- Simple procedure
- Real color model



Apply to various clinical treatment

Restoration, Implant, and Orthodontics appliance



Data in the Cloud

Multifunction online platform which will provide data cloud storage, data sharing, EOS, online treatment plan design, customer database and so on

Data format

STL,PLY,OBJ can be exported, which is compatible with any CAD software



Specification

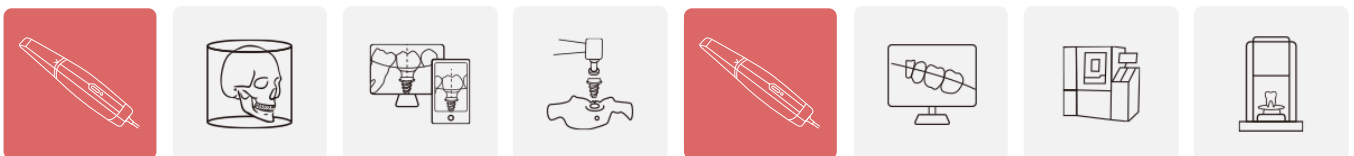
Product type	Portable intraoral scanner
Anti-fog technology	Built-in module
Sensor	High speed CMOS
Disinfection methods	121 & 134°C autoclavable
Splicing technology	Imaging Technique Accur-3D
Output format	STL PLY OBJ
Scan type	Power free colored scan
Image	Colored
Scan mode	3D video scanning
Scan Speed	5 minutes
Scan depth of field	15mm
Length of connecting cable	2m
Scanner tip	18.5mm (H) x 19mm (W)
Weight	350g
Connection	USB 3.0
Scanner	240mm (L) x 39.8mm (W) x 57mm (H)

Portable digitalized restoration treatment workflow



1. Intraoral data collection
2. Design
3. Milling
4. Completion
5. Try-on

Portable digitalized implant treatment workflow



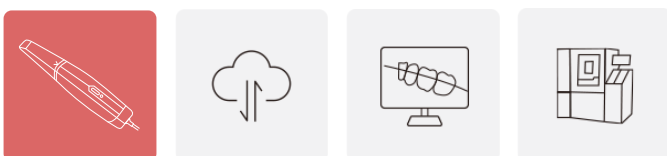
1. Intraoral data collection
2. CT data collection
3. Map out Implant Plan
4. Implant by Planting guide
5. Intraoral data collection
6. Design
7. Milling
8. Sintering/Completion

Portable digitalized orthodontics treatment workflow



1. Intraoral data collection
2. Design
3. 3D model printing
4. Compression molding of aligners
5. Completion
6. Try-on

Dental clinic to dental lab digital solution workflow



1. Intraoral data collection
2. Online data transmission
3. Design
4. Production and Send back

Follow us on: